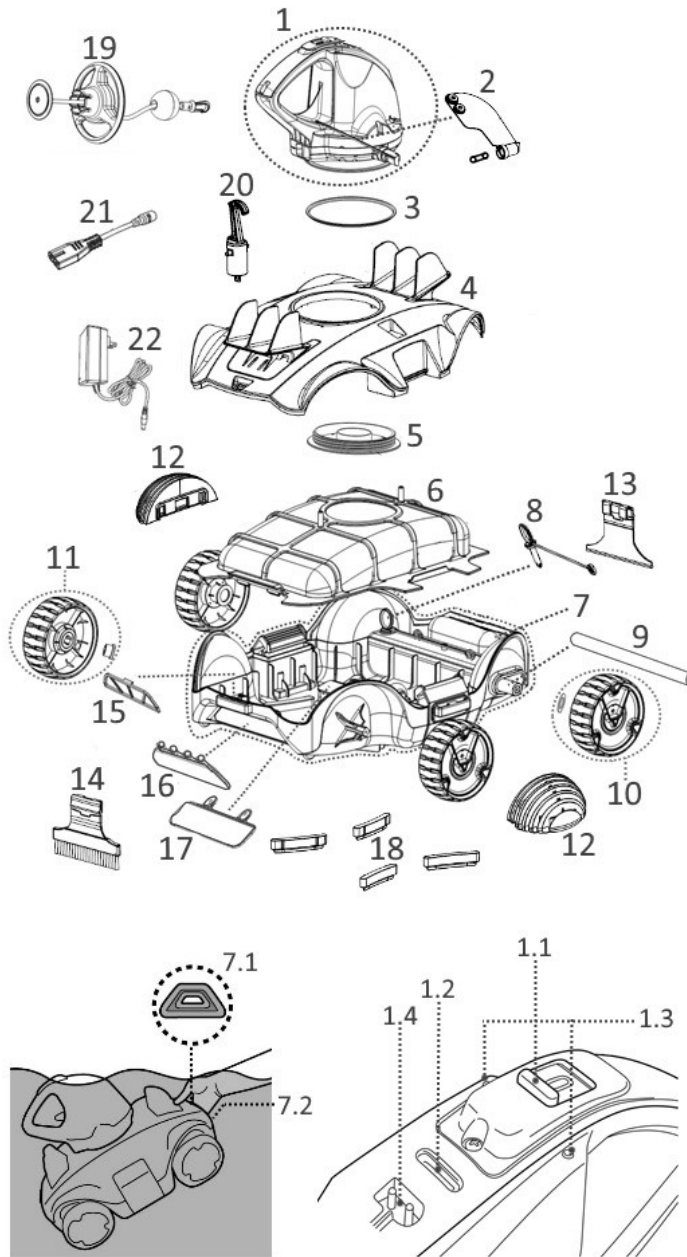


HOW THE ROBOT WORKS



Replacement Parts Number

1.	Swivel head	RC30ASM07/GRY RC30ASM07/GRY/US(USA)
1.1.	Sliding switch	-----
1.2.	Power indicating light	-----
1.3.	Water sensors	-----
1.4.	Charging port	-----
2.	Side flap (with side side pin)	RC30-07/SCP
3.	Swivel smoothing-ring	RC30-08-004/GRY
4.	Top cover	RC32ASM03/GRY
5.	Swivel head bottom screw plate	RC30-05-005/GRY
6.	Filter cover	RC30-09/GRY
7.	Base	RC32ASM04/GRY RC32ASM04/GRY/US (USA)
7.1.	Orange triangle pattern	-----
7.2.	Grip (under Orange triangle pattern)	-----
8.	Locking pin	RC30-10-014
9.	Wheel axle	
10.	Rear wheel (with washer)	RC30ASM08/GRY
11.	Front wheel (with washer)	RC30-12/GRY
12.	Bumper x 2	RC30-18/GRY
13.	Clip-on rake	RC32ASM10/GRY
14.	Clip-on brush	
15.	Draining filter plate	
16.	Drainage outlet flap	RC30ASM09/GRY
17.	Suction mouth flap	
18.	Floor Squeegee x 4	RC30-10-012/GRY
19.	Float	RC30ASM06/GRY
20.	Hook (with V-clip) for Telescopic pole)	RC30-16/GRY
21.	Charging cable	RC30-17-001
22.	Adaptor	RC30-17-002 (EU) RC30-17-002/US (USA) RC30-17-002/AU (Australia/New Zealand)

The robot has a water-propelling nozzle at the bottom of the swivel head. Water is first sucked in through the suction mouth at the bottom of the robot, which then goes through the filter and is discharged via the propelling nozzle. Water jetting from the nozzle propels the robot forward. Once the robot stops against an obstacle such as the pool wall, its side flap sways and its swivel head turns 180°, allowing the robot to move in the opposite direction. The robot moves in a generally straight pattern in one direction and in an arc pattern in the other direction. The robot vacuums the pool bottom as it moves, collecting debris in its compartment.